



# St. Benedict Catholic Church

Falcon, Colorado

## Stewardship Report to the Parish

September, 2007

In response to God's gifts, we are all called to be good stewards of what we have been given so as to build up the Kingdom of God. In response to this call, the parishioners of St. Benedict Church have given of their time, talent and treasure to their parish. The following is provided to report on the stewardship by St. Benedict Parish of these gifts over the past year, so that everyone is kept fully informed on the financial support received and obligations facing the parish, as well as ministries and services provided to our community.

St. Benedict Parish, in only its second year, expanded the Religious Education program with the addition of a kindergarten class, Phase II Confirmation and an Adult Religious Formation. This was only possible because 24 parishioners gave of their time and talent to make it happen. Elsewhere in the parish, for 2006/2007 we had:

- ❖ 2 serving in the Out Reach program
- ❖ 2 in Hospitality
- ❖ 15 as Extraordinary Ministers of Holy Communion
- ❖ 20 as Altar Servers
- ❖ 12 in Music Ministry
- ❖ 9 as Proclaimers of the Word
- ❖ 8 working behind the scenes setting up and taking down our worship space on Sundays
- ❖ 24 as Offertory Validators
- ❖ 2 managing Facilities
- ❖ 2 Bulletin/publicity
- ❖ 8 constructing storage shed at Falcon Middle School
- ❖ 35 fixing up, painting setting up the Parish House
- ❖ 1 Registrar
- ❖ 2 Health Ministry
- ❖ 1 to manage parish web site
- ❖ 9 on the Pastoral Council
- ❖ 4 on the Finance Committee
- ❖ 12 in Welcoming Ministry
- ❖ 9 Youth Program volunteers
- ❖ 9 adults and 25 youth to organize and put on the Vacation Bible School.
- ❖ In May we announced a parish wide Strategic Planning process using Focus Groups, Committees, and Teams. 72 of our faith community signed up for this important work.

The total number of hours they gave the parish - **Thousands**

Continuing what was being done since the first days of St. Benedict, we have used the talents, time, and dedication of our fellow parishioners to move and motivate the inner life of the parish. As a community we have always tried to express our indebtedness and gratitude to them individually. Collectively, we pray for God's blessing upon them. They are a true treasure to us.

And, just as we could not operate as a parish without so many volunteers, we could not have given them the resources they needed to do the work they accomplished without the financial support from the entire parish.

Operation and budgeting of the Parish changed during this past year with the appointment of a Parish Director by Bishop Sheridan. Previously, the Parish Pastoral Council oversaw the management of the committee budgets that were created by the Parish Finance Committee based on projected revenues. These conservative projections were very close to actual expenditures and the Parish was able not only

to meet its operational needs, but also set aside moneys for our future in interest bearing certificates of deposit (see page 3).

**Parish Revenue – Fiscal Year 2006-2007**

<b>Annual Weekly Offertory</b>	<b>\$82,248</b>	<b>Gifts &amp; Donations</b>	<b>\$957</b>
Regular Sunday offerings (both cash and from envelopes) plus Holy days, such as Christmas and Easter.		Includes restricted & unrestricted donations, onetime gifts, hospitality	
<b>Program Fees</b>	<b>\$2,482</b>	<b>Other Parish Revenue</b>	<b>\$3,210</b>
Includes children’s Religious Education, Vacation Bible School		Includes rebate from Diocesan Appeal, interest income	
<b>C/D Interest</b>	<b>\$591</b>	<b><u>Total Parish Revenue</u></b>	<b>\$89,488</b>

NOTE: While the Sunday offertory varied from week to week, the average 2006/2007 collection was **\$1,328.00**.  
 During that time the average number of registered households in St. Benedict was **186**.  
 This would indicate, in terms of an average, each household contributed **\$7.14** per week in the Offertory for the operation and support of their parish.

**Parish Expenses – Fiscal Year 2006/2007**

(Budgeted/Spent)

*[To make budget, the average weekly Offertory should have been \$1,552 ]*

<b>Pastoral Council</b>		<b>Publicity/Advertising</b>	\$2,620/ <b>\$1,687</b>
Property & liability insurance,	\$2,400/ <b>\$2,319</b>	Bulletin supplies/printing,	
Postage, shipping, visiting priests,		signs, flyers, newspaper ads,	
P.O box rental, ministry name tags, etc.		etc.	
<b>Facilities</b>	\$46,332/ <b>\$37,938</b>	<b>Hospitality</b>	\$1,985/ <b>\$1,748</b>
D-49 gym/classroom rental, Parish House rent,		Donuts, coffee, napkins,	
utilities, phone, furnishings, copier,		special event foodstuffs & supplies	
repairs, etc.		(Parish Picnic/1 <sup>st</sup> Communion/	
<b>Religious Education</b>	\$3,297/ <b>\$3,190</b>	Confirmation) etc.	
Books, manuals, teacher supplies,		<b>Finance Committee</b>	\$1,416/ <b>\$1,094</b>
postage/shipping, etc.		Software, software maintenance,	
<b>Liturgy</b>	\$1,689/ <b>\$1,507</b>	office supplies, etc.	
Hosts, wine, candles, Book of		<b>Liturgical Environment</b>	\$3,000/ <b>\$153</b>
the Gospels, proclaimer books,		Material & supplies	
missalettes/song books, postage/		<b>Personnel (Dec-June 2007)</b>	* <b>\$34,195</b>
shipping, etc.		The Parish Director’s salary & benefits	
<b>Music Ministry</b>	\$650/ <b>\$227</b>	are being paid with a no interest	
Music books, music licensing,		loan from the Diocesan Mission	
music stands, etc.		Organization Fund.	
<b>Outreach</b>	\$1,000/ <b>\$771</b>	<b><u>Total Expenses</u></b>	<b>\$64,379/\$50,634</b>
Food baskets, “Baby Shower” tea, etc.			

## St. Benedict Parish Budget – Fiscal Year 2007/2008

The 2007-2008 budget, based on actual program expenditures from the preceding year, was submitted to the Diocese in June. It was restructured to accommodate the administrative responsibilities of a Parish Director and the financial reporting responsibilities of the various ministries and programs.

*[To meet this budget the weekly Offertory must average \$2,350]*

<b>Facilities</b>	<b>\$32,706</b>	☞
<b>Religious Education</b>	<b>\$4,600</b>	
<b>Office of Parish Director</b>	<b>\$7,368</b>	
<b>Finance Council</b>	<b>\$2,707</b>	
<b>Liturgy</b>	<b>\$2,885</b>	
<b>Music Ministry</b>	<b>\$550</b>	
<b>Liturgical Environment</b>	<b>\$400</b>	
<b>Outreach</b>	<b>\$1,300</b>	
<b>Hospitality</b>	<b>\$1,600</b>	
<b>Welcoming</b>	<b>\$120</b>	
<b>Health Ministry</b>	<b>\$100</b>	
<b>Publicity &amp; Advertising</b>	<b>\$3,375</b>	
<b>*Personnel</b>	<b>\$60,888</b>	

School rental will be approximately \$1,800 per month from October thru May, and \$1,000 during the summer months. This rate was increased by D-49 after the parish 07/08 budget was set.

Parish House rental of \$1,245, increased \$50.00 per month after March 1<sup>st</sup> of each renewal year.

\*The Diocese of Colorado Springs, using moneys from a restricted grant, created a Mission Organization Fund to assist newly formed parishes by making no-interest loans to pay for their priest or Parish Director's salary and benefits. While there is no set repayment schedule attached to this loan, the Fund itself is limited. St. Benedict is the only parish drawing from the Fund, which should run out of available money by the middle of March, 2008. At that time, the parish will have to pay the Parish Director's salary and benefits, if it is to have someone in this position.

**T**he only liability facing the parish at this time is the note payable to the Diocese of Colorado Springs Mission Organization Fund for the Parish Director position's salary and benefits. At this time, St. Benedict repays the Fund at 10% of the monthly offertory to reduce the principal of this loan.

The parish currently has three Certificates of Deposit as Restricted Funds for the anticipated capital campaign to build a multi-purpose facility with dedicated worship space, Religious Ed. classrooms, offices and meeting spaces.

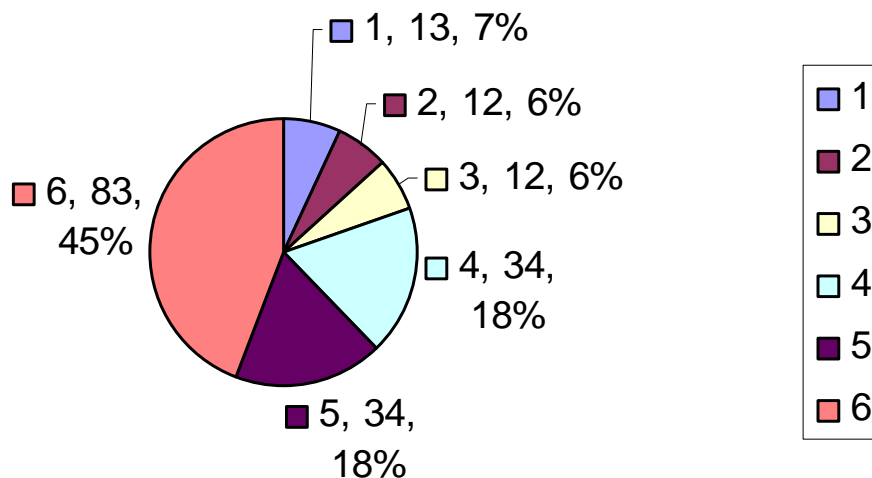
- C/D #1 - \$20,000, matures 9/07
- C/D #2 - \$15,000, matures 12/07
- C.D #3 - \$15,000, matures 3/08

To meet regular expenses and deal with unforeseen emergencies, the parish maintains a current bank balance adequate for these purposes. The end of the fiscal year balances for the last two years were:

- July 1, 2006 - \$23,775
- June 30, 2007 - \$23,163

In an effort to keep everyone informed about the parish budget, the financial obligations and weekly offertory, this information will be posted on the St. Benedict web site. [www.stbenedictfalcon.org](http://www.stbenedictfalcon.org)

## St. Benedict Parish - Offertory Giving Pattern



The only resource St. Benedict Parish has to determine weekly Offertory giving patterns is contributions associated to individual contributors. This information is used to evaluate the immediate and long term financial health of the parish. It is also a major indicator of the feasibility of conducting a successful capital campaign to build the facilities St. Benedict will need in the coming years.

During the period from January 1, 2007, and September 18, 2007, identified contributions totaled \$50,448.42, and loose cash was \$3,975.25.

The above chart indicates the number of identified contributors by several ranges of giving:

<b>Group 1</b> - \$1,000 or more during this period, 13	<b>7%</b>
<b>Group 2</b> - \$700 to \$999 during this period, 12	<b>6%</b>
<b>Group 3</b> - \$400 to \$699 during this period, 12	<b>6%</b>
<b>Group 4</b> - \$100 to \$399 during this period, 34	<b>18%</b>
<b>Group 5</b> - \$1.00 to \$99 during this period, 34	<b>18%</b>
<b>Group 6</b> - \$0.00 contributions associate by name, 83	<b>45%</b>

St. Benedict Parish needs Offertory contributions made in a way that makes it possible to plan its immediate and long term future and provide parishioners accurate documentation of their charitable giving. Making contributions using check, offertory envelops, or by electronic direct deposit are the three easiest ways to do this.